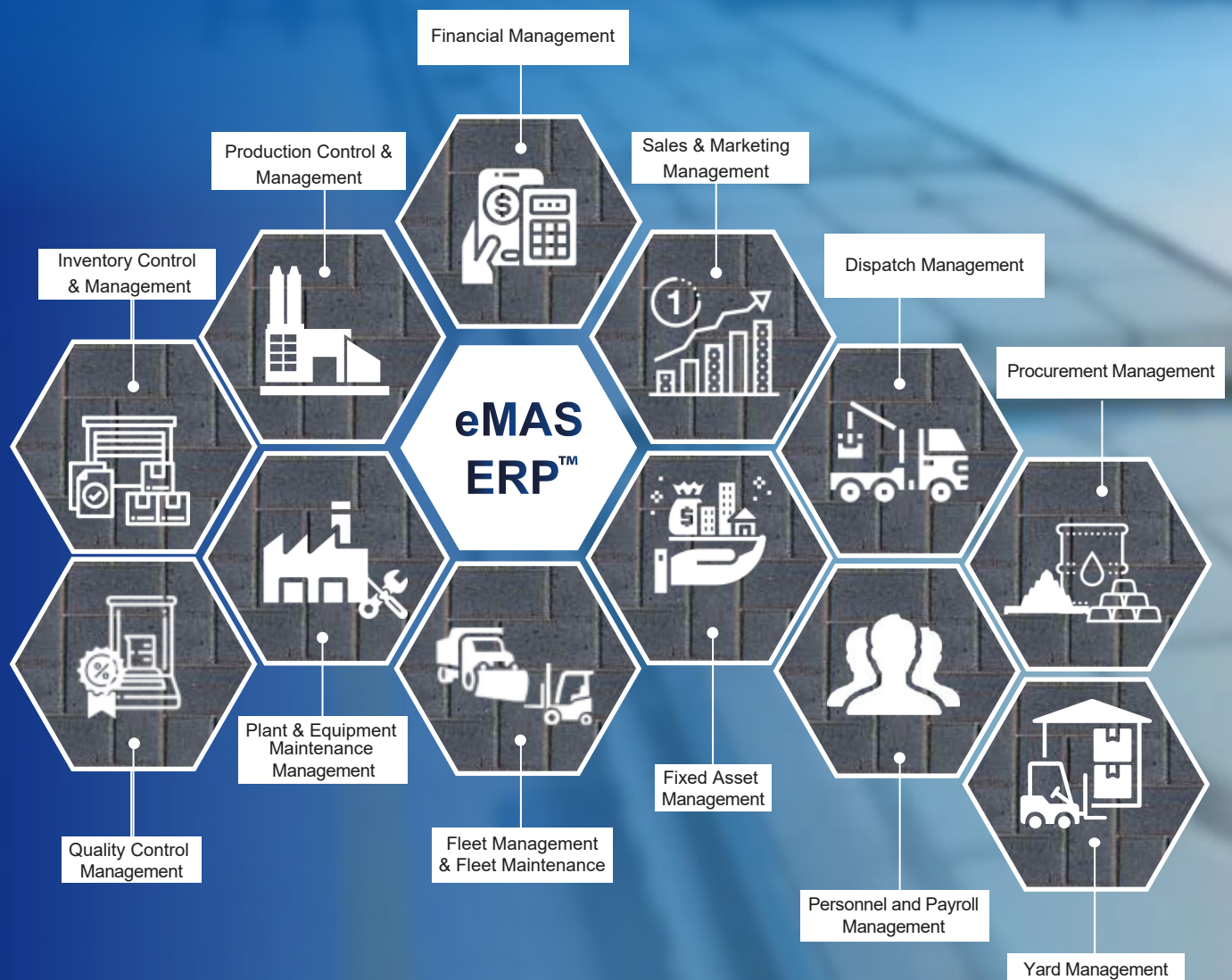




# An ERP system specifically designed for the concrete products manufacturing industry

**22+ years of industry experience**

eMAS ERP™ is an ERP system specifically designed for the concrete products manufacturing industry. The system has proven that it takes care of every aspect and requirement of the concrete products manufacturing industry. eMAS ERP™ has been successfully implemented in many concrete products manufacturing companies across the region for over two decades.



## Sales Force Automation

- ✓ Prospect details with multiple contacts information.
- ✓ Scan and attach all prospect related documents.
- ✓ Record and track all customer enquiry.
- ✓ Standardize, track and analyze customer quotation.
- ✓ Control products sale price with predefined product pricing structure.
- ✓ Equip Sales team with eMAS MobiSales™ mobile app for customer management on the go.



## Production Management

- ✓ Define Multiple work centers such as MASA, HESS, Quadra etc.
- ✓ Option to auto generate product code as per user defined criterion.
- ✓ Define special products with process details such as (Blasted, Curled, Coated).
- ✓ Define various layout designs.
- ✓ Online costing of finished products.
- ✓ Calendar based production planning module based on customer order or fast moving regular products.
- ✓ Capture cubing details, wastage, seconds item information.
- ✓ Analyze plant utilization.



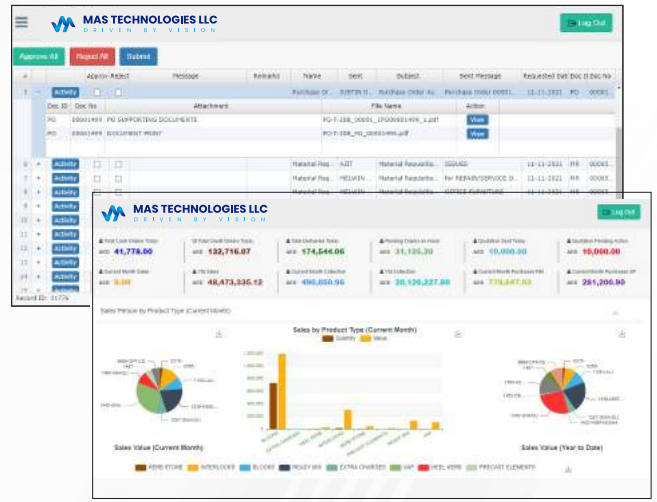
## Plant Integration

- ✓ Benefit from our expertise in plant integration.
- ✓ Retrieve production related data, raw material consumption detail directly from the plant to ERP system.
- ✓ Avoid manual entry of production details at the end of the shift.
- ✓ Capture production stoppage details automatic for plant utilization analysis.



## Electronic Document Approval

- ✔ Web based intuitive graphical display of vital information.
- ✔ Access current data easy and fast.
- ✔ Drill-Down features to access detail information.
- ✔ Electronic document authorization with facility to view multiple attachments.
- ✔ Approve or reject multiple documents with digital Signature.
- ✔ View previous approval details.



## Fleet Management and Fleet Maintenance

- ✔ Maintain complete fleet and driver information.
- ✔ Track vehicle registration, insurance and permit schedules.
- ✔ Pre-start template for each fleet type for easy recording of daily check.
- ✔ Interface to vehicle GPS system for recording vital vehicle movement data.
- ✔ Enable fleet manager to schedule and control vehicles for preventive maintenance.
- ✔ User-defined preventive maintenance checklist.
- ✔ Track repair history for both in-house and outside repairs.
- ✔ Track Tyre usage and control maintenance cost.



## Plant and Equipment Maintenance

- ✔ Maintain plant and plant sub parts.
- ✔ Maintain spare part details for each plant.
- ✔ Define maintenance schedule with manpower & tools requirement.
- ✔ Create and track both preventive as well as breakdown maintenance work order.
- ✔ Track equipment breakdown and maintenance history.



## Quality Control

- ✓ In-process quality check data during production.
- ✓ Compressive strength analysis.
- ✓ Tensile splitting strength analysis.
- ✓ Transverse strength analysis.
- ✓ Sieve analysis – Raw material.
- ✓ ACV Analysis – Raw material.
- ✓ Silt Analysis by decantation method- raw material.



## Automated Loading System

- ✓ All weather supported barcoded product bundle tags.
- ✓ Automate your product picking and delivery process through forklift mounted system.
- ✓ Eliminate loading of wrong products as the system rejects wrong products while loading.
- ✓ Automated Delivery note generation based on the products and bundles loaded.
- ✓ Gain total control on your finished product stock.

## Yard Management

- ✓ Identify product storage lanes for each product.
- ✓ Organize product storage yard.
- ✓ Easily reserve lanes for storing products related to prestigious products.
- ✓ Graphical view of product storage in each yard.
- ✓ Instantly find out the total stock of products in each lane.
- ✓ Fully automated RFID based system for lane identification.
- ✓ Gain full control over product picking and delivery process.



**MAS TECHNOLOGIES LLC**  
DRIVEN BY VISION

**Tel:** +971 4 2501842 | **Fax :** +971 4 2501843 | **Mob:** +971 50 8483628

Suite 306 | Bu Shaquer 2 | Al Garhoud | Near GGICO Metro

P.O.BOX 29197 | Dubai | U.A.E Web: [www.mas-technology.com](http://www.mas-technology.com)